

# The AI-Native Enterprise

## The Future Operating Model for Regulated Industries

The organizational shift every CIO and Chief Architect is now navigating — in seven decisions.

### 1 The CIO Dilemma

WHY NOW

#### PRESSURE

Boards expect AI-driven value. Business users are already shipping with AI. Speed expectations have collapsed from quarters to weeks — and that is now the baseline assumption in most leadership conversations.

#### SLOWDOWN

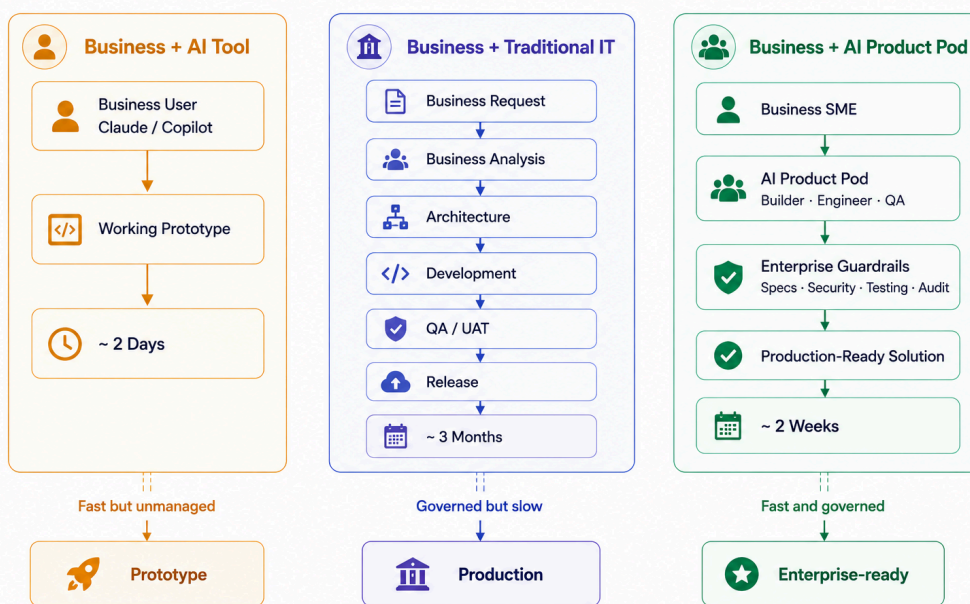
Compliance, security review, change control, audit — each one serves a real purpose. Together, they make traditional IT feel slower than it has ever felt, exactly when the business needs it to move faster.

The problem is not technology. It is the operating model. Buying more AI tools without rewiring how delivery happens will widen the gap, not close it.

### 2 Three Paths to Production

VIBE CODING · TRADITIONAL IT · AI PRODUCT POD

#### Why IT Feels Slower — and How AI Product Pods Close the Gap



2 days (fast but unmanaged) · 3 months (governed but slow) · 2 weeks (fast and governed). The AI Product Pod is the only path that delivers business speed with enterprise discipline.

### 3 Enterprise Guardrails

SIX EMBEDDED CONTROLS — APPLIED TO EVERY AI BUILD

#### Spec Standards

How we build consistently — inputs, outputs, rules.

#### Security Controls

Secure by design. Encryption, identity, secrets.

#### Data Access Rules

Right data, right people. RBAC, lineage, masking.

#### Automated Testing

Continuous regression, edge cases, compliance.

#### Audit & Observability

Every action logged for compliance and learning.

#### Production Ownership

Accountable always. No orphaned agents in production.

### 4 The New Role of IT & Enterprise Architecture

FROM BUILDING SOFTWARE TO ENABLING BUILDERS

#### TRADITIONAL IT

- Gather requirements
- Build applications
- Test applications
- Deploy applications

#### AI-NATIVE IT

- Enable builders across the business
- Provide governance & security fabric
- Manage AI platforms, models, agents
- Secure data, models, and access
- Accelerate enterprise-wide innovation

#### ENTERPRISE ARCHITECTURE

- **Standards** · SDD, APIs, security
- **Patterns** · Reference architectures
- **Shared Components** · Connectors, agents
- **Embedded Governance** · Compliance & audit

INSURANCE EXAMPLE

SUBMISSION INTAKE POD  
Insurance · Underwriting

Intake · Clearance · SOV · Due Diligence

4 weeks  
DELIVERY CYCLE

5 Three Speed Lanes

ONE ENTERPRISE · THREE DELIVERY CADENCES

LANE 1

Individual Productivity

AI assistants, prompts, self-service tools — embedded into every knowledge worker's day.

Hours

LANE 2

Business Solutions

Agents, workflows, apps delivered by AI Product Pods — most enterprise differentiation lives here.

Days · Weeks

LANE 3

Core Enterprise Systems

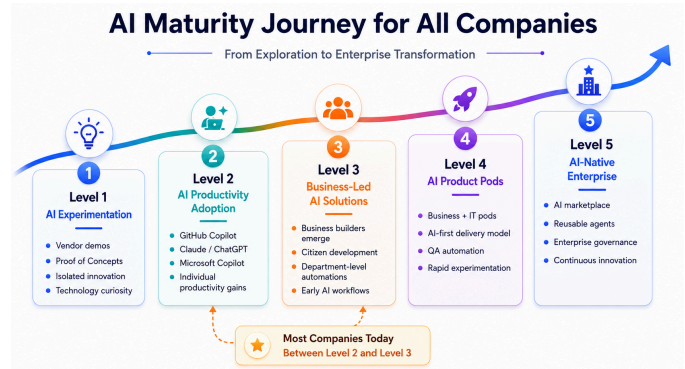
Mission-critical platforms, integrations, system-of-record modernization.

Weeks · Months

**Governance across all lanes:** Security · Architecture · Data · Compliance · FinOps · Audit. The lanes differ in speed; the governance fabric is identical.

6 AI Organization Maturity

FIVE LEVELS · MOST ENTERPRISES SIT AT LEVEL 2-3



**YOU ARE HERE** Employee AI adoption is outpacing formal governance. The transition to **Level 4 is now strategy work, not experimentation work.**

7 The CIO Decision Matrix

SEVEN SHIFTS THE NEXT 12-18 MONTHS WILL FORCE

DECISION AREA	TRADITIONAL ENTERPRISE	AI-NATIVE ENTERPRISE
Delivery	Projects	Products
Teams	Functional silos	AI Product Pods
Requirements	Documents	Working prototypes & specs
QA	Manual	AI-assisted & continuous
Support	Ticket-driven	Agent-assisted L1
Innovation	IT-led	Business-led, IT-enabled
Governance	Review gates	Embedded controls

WHAT TO DO NEXT

None of these shifts can be made in isolation. Sequence them deliberately — or the organization will sequence them unevenly for you.

Full whitepaper · 22 pages  
verticalserve.com



SCAN FOR PDF